

## ruffled halter

This adorable halter has a simple pull-on style that's easy and fun for summer, featuring a casing formed by the first ruffle for a clean, uncluttered finish. For other fun looks, try making each ruffle with a different fabric, or cut the ruffles from striped fabric with the stripes going in different directions.

**DESIGNED BY** *Oliver + S*

[Photo on page 45; instructions on page 89 of *Stitch* magazine Spring 2010]



oliver + s



**BONUS**  
*pattern*



oliver + s



**BONUS**  
*pattern*



DOWNLOAD THE FULL-SIZE  
PATTERN FOR THIS PROJECT  
AT [INTERWEAVESTITCH.COM](http://INTERWEAVESTITCH.COM)

## Ruffled Halter

By **LIESL GIBSON** {from page 41}

### FABRIC

—1 (1¼, 1¼, 1½, 1½) yd (91.5 cm [1.1, 1.1, 1.4, 1.4 m]) light- to medium-weight woven fabric, such as quilting cotton, shirting, or linen (for a crisper look, try silk taffeta or douppioni)

### OTHER SUPPLIES

- Matching sewing thread
- About 9 (10, 11, 12, 13)" (23 [25.5, 28, 30.5, 33] cm) of ¾" (1 cm) wide elastic
- Tailor's chalk or water-soluble fabric marker
- Point turner or other turning tool such as a knitting needle or chopstick
- Scrap of tissue paper (optional)
- Serge or pinking shears (optional)
- Bodkin or safety pin
- Full-size pattern PDF on [interweavestitch.com](http://interweavestitch.com)

**FINISHED SIZE:** XS: fits sizes 18–24M/2T; S: fits sizes 3T–4T; M: fits sizes 5–6; L: fits sizes 7–8; XL: fits sizes 10–12

### SIZE CHART

	LENGTH (AT SIDE SEAM)	LENGTH (AT CENTER FRONT)
<b>XS</b>	9" (23 cm)	12¼" (31 cm)
<b>S</b>	10" (25.5 cm)	13¾" (35 cm)
<b>M</b>	11" (28 cm)	15¼" (38.5 cm)
<b>L</b>	12" (30.5 cm)	16¾" (42.5 cm)
<b>XL</b>	13" (33 cm)	18¼" (46.5 cm)

Shown in size *Small*.

### NOTES

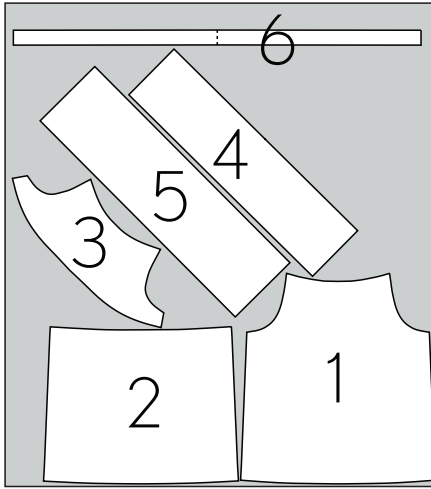
- For explanations of terms and techniques and/or help with pattern markings, see *Sewing Basics* on pp. 82–88.
- Ruffles cut on the bias have a nice drape, and stitching their raw edge helps keep fraying under control while giving them a soft edge.
- When instructed to finish the seam allowances, you have a few options. Serge the edges, use a zigzag or an overcasting stitch on your sewing machine along the edges, or stitch ¼" (6 mm) from the edge and then pink the raw edges to prevent raveling.

### CUT FABRIC

**1** Trace and cut all pattern pieces from the fabric, referring to the Cutting Layout above. Be sure to transfer all pattern markings to the wrong side of the fabric, except the Front Halter.



## CUTTING LAYOUT



PATTERN #	NAME
1	Front Halter
2	Back Halter
3	Ruffle #1
4	Ruffle #2
5	Ruffle #3
6	Tie

For Front Halter (see note below): Using tailor's chalk or a water-soluble fabric-marking pen, trace the center front line and the ruffle placement lines on the fabric's right side and the dots on its wrong side.

*Note:* Once you've marked the notches and transferred the dots to the fabric, an easy way to transfer the ruffle placement lines to the fabric is to trim the paper pattern piece at the Ruffle #3 placement line and lay the trimmed pattern piece back on the fabric to trace the newly cut line. Then trim the pattern piece again, this time at the Ruffle #2 placement line, and transfer that line to the fabric.

### ASSEMBLE RUFFLE #1 & CREATE TIE CASING

**2** Topstitch the bottom edge of Ruffle #1 with a regular straight stitch,  $\frac{1}{4}$ " (6 mm) from the raw edge of the fabric. This stitching will allow the ruffle to ravel a bit without getting too messy. Be careful not to stretch the bias edge as you stitch.

**3** Pin the right side of Ruffle #1 to the wrong side of the Front Halter, matching the top and armhole edges (note that the lower edge of Ruffle #1 is wider than the Front Halter, so the bottom edge will not lie flat when the top and armhole edges are matched together, allowing the ruffle to stand away from the halter when it's worn). Stitch the ruffle's top edge with a  $\frac{1}{2}$ " (1.3 cm) seam. Then, stitch the armholes with a  $\frac{1}{2}$ " (1.3 cm) seam, beginning at the dot you transferred from the pattern piece (located  $\frac{5}{8}$ " [1.5 cm] below the top seamline)

and backtacking at the dot as well as at the end of the seam (**figure 1**). The gap left above the dot will become the opening of the casing for the halter Tie.

**4** Trim the seam allowances to  $\frac{1}{8}$ " (3 mm) and turn the ruffle to the right side. As you turn the corners right side out, the seam allowances at the opening of the casing might get pushed out through the gap; gently tuck them back inside (use the point turner, knitting needle, or chopstick) before finger-pressing the stitched edges, rolling them slightly to the wrong side before pressing them with an iron to finish the top and armholes.

*Note:* Lay a scrap of tissue paper below the corner where you start edgestitching (in Step 5) to prevent the corner from being pushed into the throat plate hole as you begin to stitch. Once you're finished, carefully tear the tissue paper away without affecting the stitching.

**5** With the seam allowances tucked inside the casing opening, edgestitch the halter's top edge.

**6** Using tailor's chalk or a water-soluble fabric-marking pen, draw a line  $\frac{5}{8}$ " (1.5 cm) from the top edge of the halter ( $\frac{1}{2}$ " [1.3 cm] from your edgestitching). This line should intersect the bottom edge of the gap you left

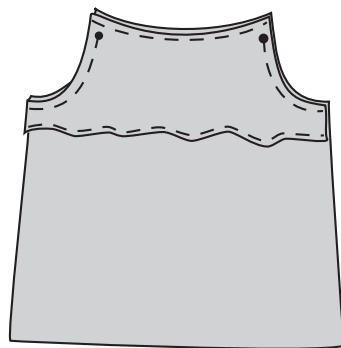


figure 1

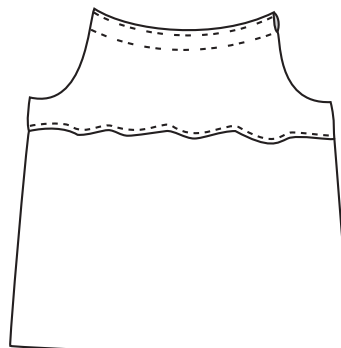


figure 2



for the casing. Stitch along line to create the casing (**figure 2**).

### HEM FRONT HALTER & ATTACH RUFFLES

**7** Fold and press  $\frac{1}{2}$ " (1.3 cm) to the wrong side along the Front Halter's bottom raw edge, then fold and press an additional 1" (2.5 cm) to the wrong side. Edgestitch the innermost folded edge to finish the hem (**figure 3**).

**8** Topstitch the bottom edge of Ruffle #3 with a regular straight stitch,  $\frac{1}{4}$ " (6 mm) from the fabric's raw edge, as you did with Ruffle #1 (in Step 2).

**9** Stitch two rows of gathering stitches at the top edge of Ruffle #3,  $\frac{1}{8}$ " (3 mm) and  $\frac{1}{4}$ "

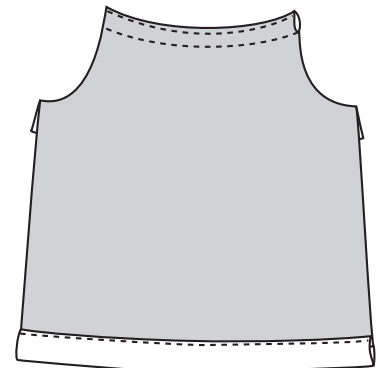


figure 3

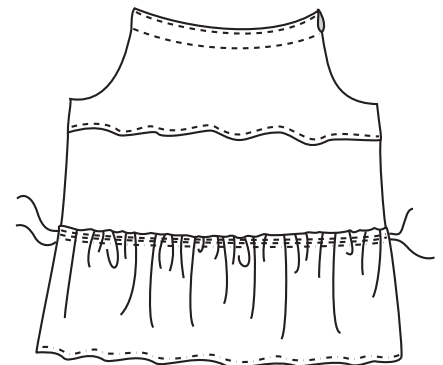


figure 4



(6 mm) from the top edge. Fold the ruffle in half widthwise to find the center, and mark it with a pin.

**10** Pin the side edges of Ruffle #3 so that the ruffle's top edge touches the Ruffle #3 placement line you transferred from the pattern piece. Pin the center of the ruffle to the halter's center line, then pull the gathering stitches to match the ruffle width to the halter.

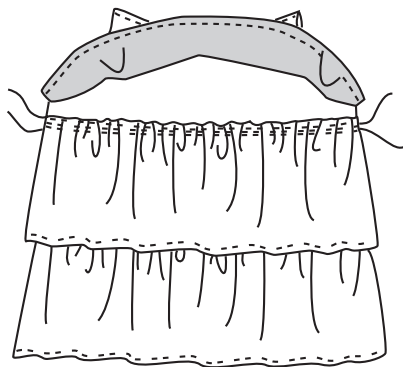


figure 5

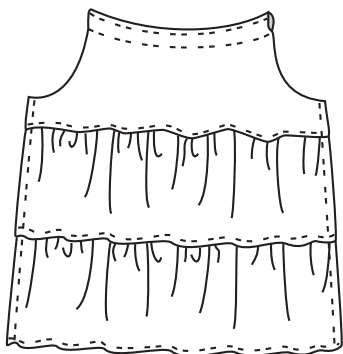


figure 6

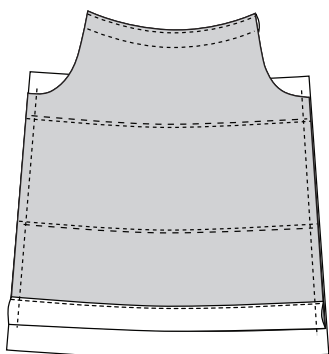


figure 7

Check to make sure the bottom edge of the ruffle matches the finished hem of the Front Halter, and adjust the placement of the ruffle slightly higher or lower, if necessary. Distribute the gathers equally and pin the ruffle's full width to the Front Halter (**figure 4**).

**11** Stitch the ruffle to the halter between the two rows of gathering stitches (a narrow  $\frac{1}{4}$ " [5 mm] seam). If desired, use a zigzag stitch across the top edge of the ruffle to hold the gathered edge flat against the halter. Trim the tails of the gathering stitches, or completely remove the gathering stitches if desired.

**12** Repeat Steps 8–11 to prepare and attach Ruffle #2 at the second placement line. Lift Ruffle #1 out of the way, and align the top of Ruffle #2 with the #2 placement line (**figure 5**).

**13** Pin the side edges of the ruffles to the side edges of the Front Halter, and baste them  $\frac{3}{8}$ " (1 cm) from the raw edges (**figure 6**).

#### ASSEMBLE HALTER

**14** Align and pin the Front and Back halters, right sides together, matching the finished top

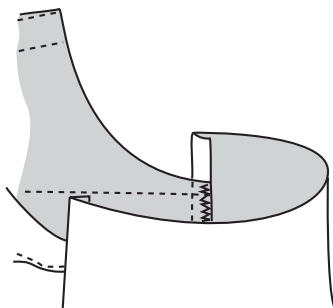


figure 8

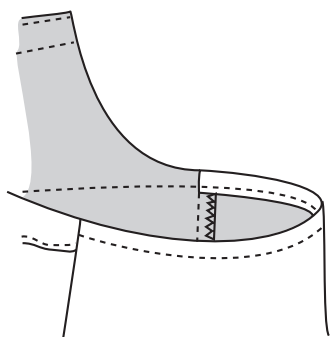


figure 9

and bottom edges of the Front Halter to the notches on the Back Halter. The excess length of the Back Halter will become the elastic casing at the top edge and the hem at the bottom edge. Stitch the sides with a  $\frac{1}{2}$ " (1.3 cm) seam, catching the ruffles in the seam (**figure 7**).

**15** Finish the seam allowances together and press the seam allowances toward the Back Halter. Continue pressing the seam allowances to the wrong side through the casing and hem allowances (**figure 8**). Press carefully to avoid flattening the ruffles.

**16** Fold and press  $\frac{1}{2}$ " (1.3 cm) to the wrong side along the Back Halter's top raw edge. Fold and press an additional  $\frac{1}{2}$ " (1.3 cm). The outside folded edge should match the Front Halter's finished edge (**figure 9**). Edgestitch the innermost folded edge to form the elastic casing.

**17** Fold and press  $\frac{1}{2}$ " (1.3 cm) to the wrong side along the Back Halter's bottom raw edge, then fold and press an additional 1" (2.5 cm). Edgestitch the innermost folded edge to finish the hem, and edgestitch (by machine) or blindstitch (by hand) the folded short ends of the hem to finish them.

**18** Attach a bodkin or safety pin to one end of the  $\frac{3}{8}$ " (1 cm) wide elastic, and feed it through the back casing. Adjust the elastic to fit the wearer, and pin each end of the elastic along the side seams. Stitch back and forth through the elastic and all the layers, just inside the end of the casing (about  $\frac{1}{4}$ " [6 mm] from the folded end) to secure it, and trim the excess elastic length.

*Note:* To trim the ends of the elastic, stretch it while you cut near the opening of the casing. Once you've trimmed the elastic, it will bounce back inside the casing, hiding the cut edges.

#### MAKE TIE

**19** Fold and press the short ends of the Tie toward the wrong side by  $\frac{1}{2}$ " (1.3 cm). Fold the Tie in half lengthwise, wrong sides together, and press the fold to create a center crease.

**20** Open the lengthwise fold, and lay the Tie flat and wrong side up (with the short edges still pressed to the wrong side). Fold each of the fabric's two long raw edges in to meet at the center crease, and press these two folds.

**21** Fold the fabric along the center crease again and press it, enclosing the raw edges in the fold. The fabric is now folded in four thicknesses to form the Tie.

**22** Edgestitch the Tie along its open edge to finish it.

**23** Attach a bodkin or safety pin to one end of the Tie, and feed it through the front casing.

**LIESL GIBSON** is the founder and designer for the children's wear pattern company *Oliver + S*. See the profile on Liesl on pages 41–45 and visit her website at [oliverands.com](http://oliverands.com).

## GETTING STARTED

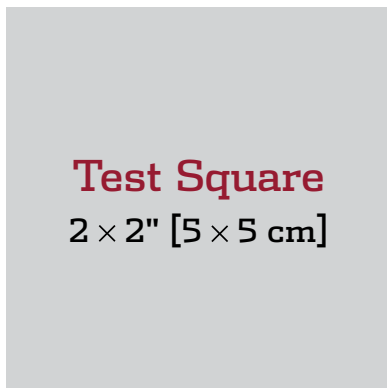
Basic techniques & terms you'll need to know for the pattern you have downloaded.

## ASSEMBLING FULL-SIZE PATTERN PRINTOUT

**1** To ensure that the pattern has printed at the correct scale, check the size of the TEST SQUARE. The Test Square should be 2 × 2" (5 × 5 cm).

**2** To begin assembling the pattern, cut off or fold the dotted margin around each page.

**3** The pages are numbered in rows, so the first row of pages is numbered 1a, 1b, 1c, etc. Line up the rows and match the dotted lines together so they overlap. Tape the pages together. Use the illustrated guide to match each piece. Once the pattern is complete, find your size, pin the pattern to the fabric, and follow the coordinating line to cut out or trace the pattern.



## LAYOUT, MARKING & CUTTING GUIDELINES

**1** Find the lines that correspond to your size and trace the pattern pieces, either on tissue paper or directly onto the fabric, using tracing paper and a tracing wheel.

**2** If you are cutting pattern pieces on the fold or cutting two of the same pattern piece, fold the fabric in half, selvedge to selvedge, with right sides facing.

**3** Lay the pattern pieces on the fabric as close together as possible. Double-check that all pattern pieces to be cut "on the fold" are placed on the fold.

**4** Make sure all pattern pieces are placed on the fabric with the grainline running parallel to the lengthwise grain.

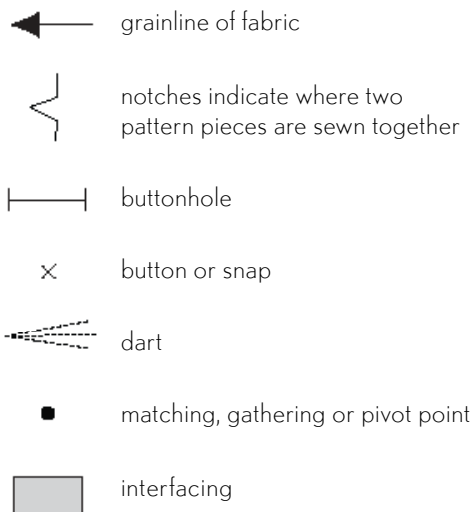
**5** Copy all pattern markings onto the wrong side of the fabric.

**6** Read through all cutting instructions listed in the project instructions for directions on how many pattern pieces to cut out of your fabric and interfacing.

**7** Use weights to hold the pattern pieces down and use pins to secure the corners as needed.

**8** Cut the pieces slowly and carefully.

## PATTERN SYMBOLS & MARKINGS



## TERMS

**GRAINLINE** The arrow should be parallel to the lengthwise grain or fold unless it is diagonal, in which case it indicates cutting on the bias (at a 45° angle to the grain).

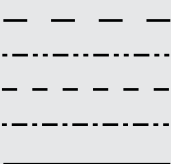
**NOTCHES** Notches are triangle-shaped symbols used for accurately matching seams. Pieces to be joined will have corresponding notches.

**DARTS** Dashed lines mark darts. The dashed lines show where the stitching will be.

## SIZE CHART

**Ruffed Halter**  
by OLIVER + S

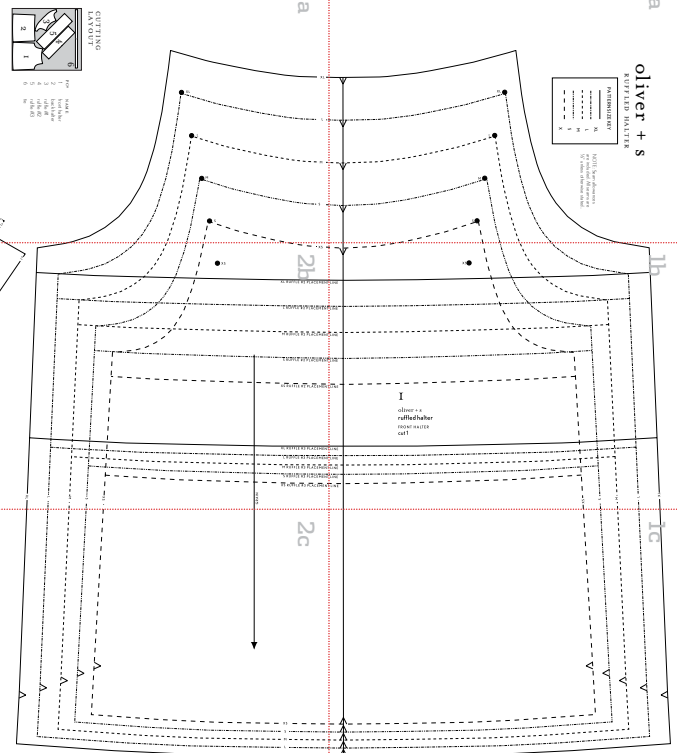
CUTTING LINE



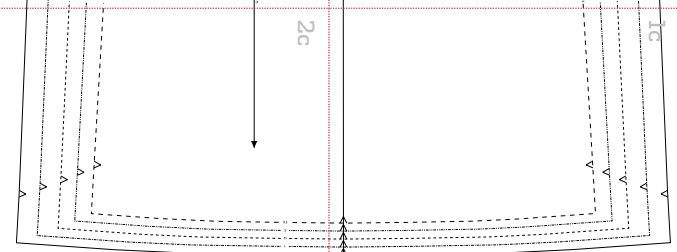
SIZE	LENGTH (AT SIDE SEAM)	LENGTH (CTR FRONT)
XS	9" (23 cm)	12¼" (31 cm)
S	10" (25.5 cm)	13¾" (35 cm)
M	11" (28 cm)	15½" (38.5 cm)
L	12" (30.5 cm)	16¾" (42.5 cm)
XL	13" (33 cm)	18¼" (46.5 cm)

1a  
oliver + s  
REITZIG HAARE

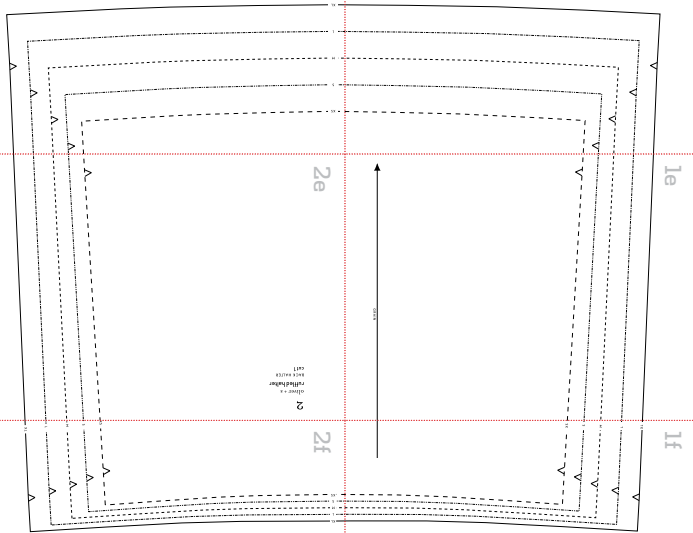
FRÄHMÄSSIG  
 1. 1.5 cm  
 2. 1.5 cm  
 3. 1.5 cm  
 4. 1.5 cm  
 5. 1.5 cm  
 6. 1.5 cm



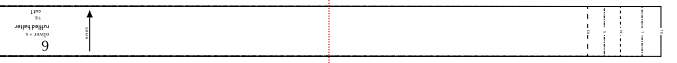
1c



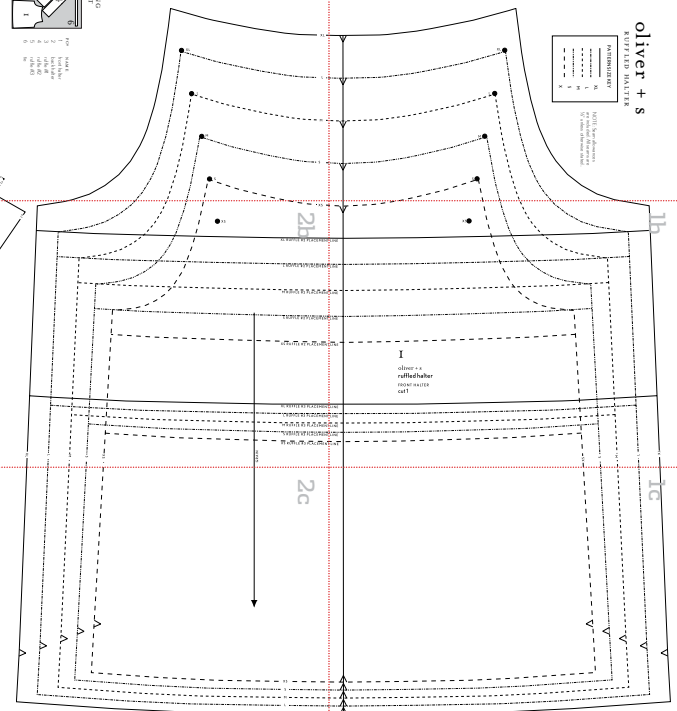
1d



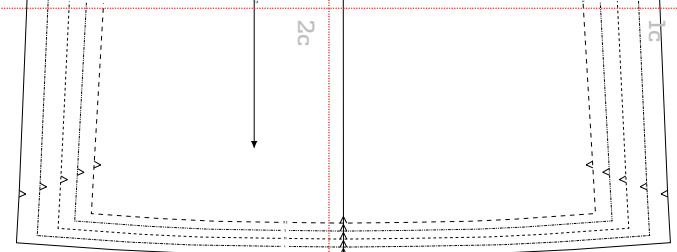
1f



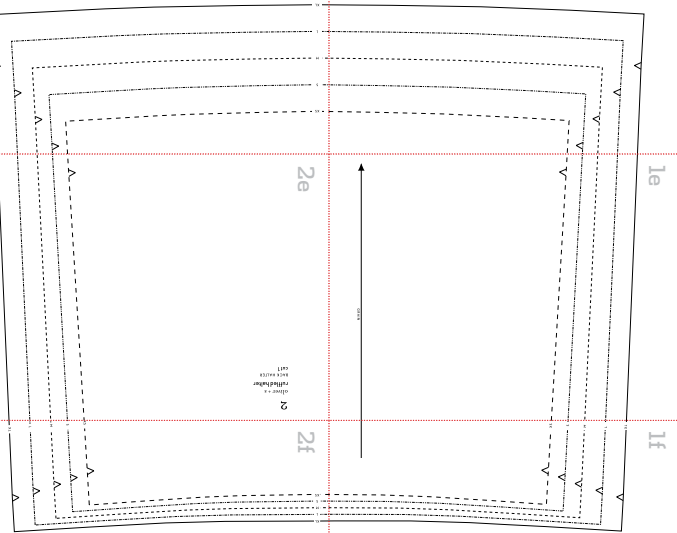
2a



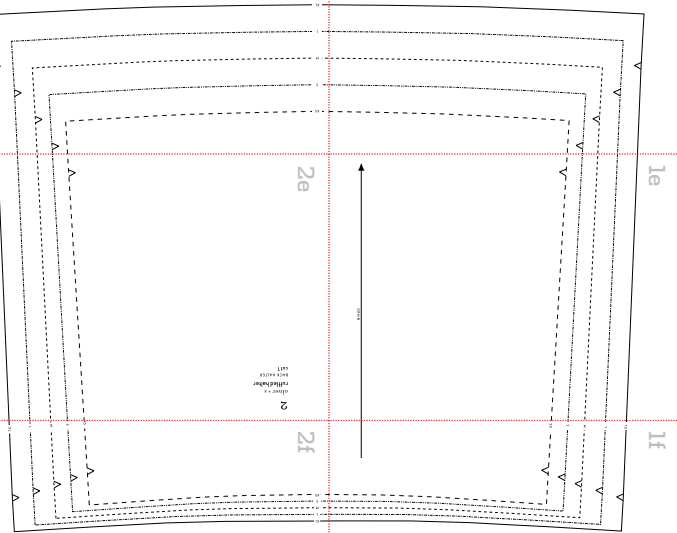
2c



2d



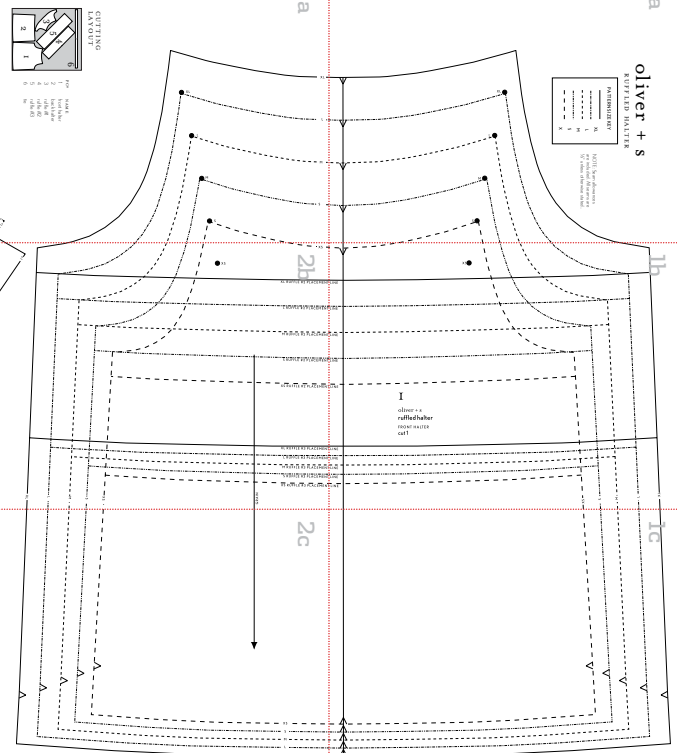
2e



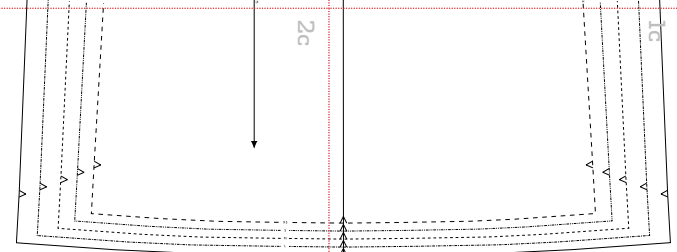
2f



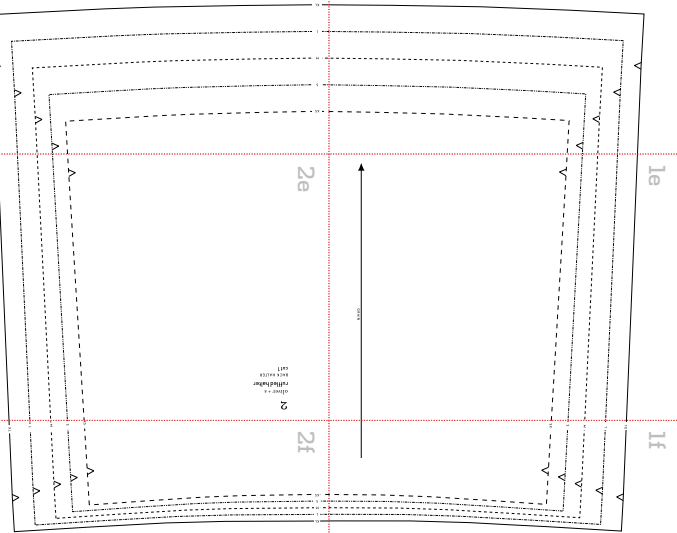
3a



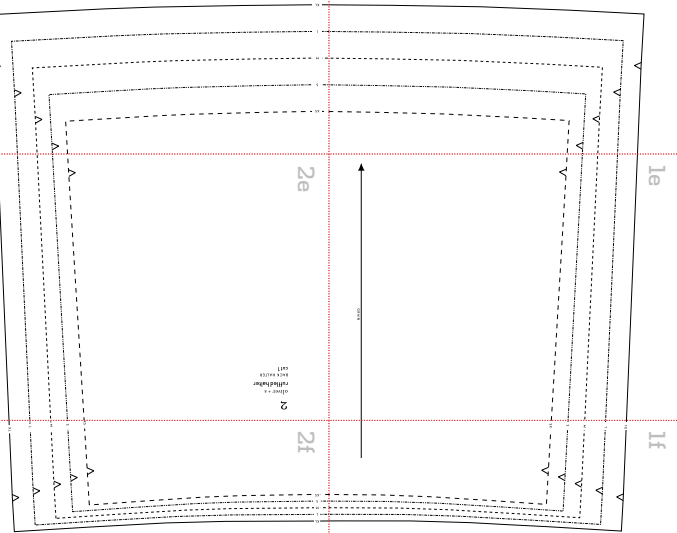
3c



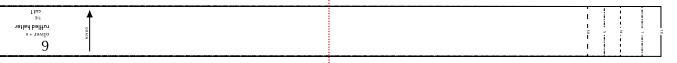
3d



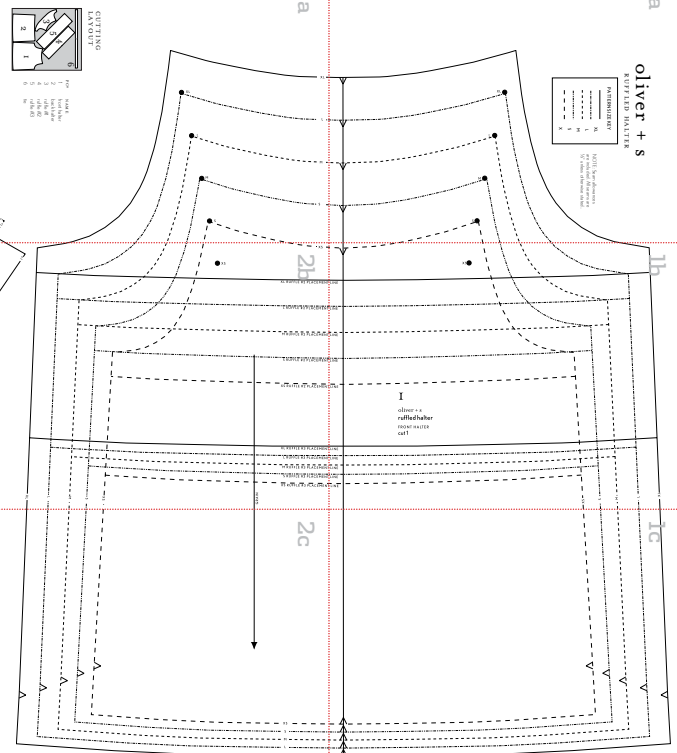
3e



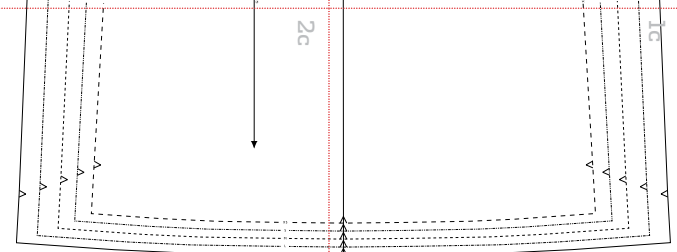
3f



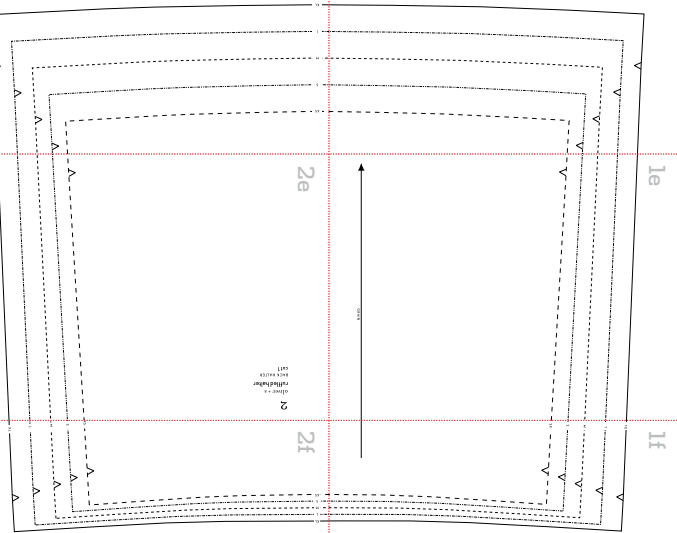
4a



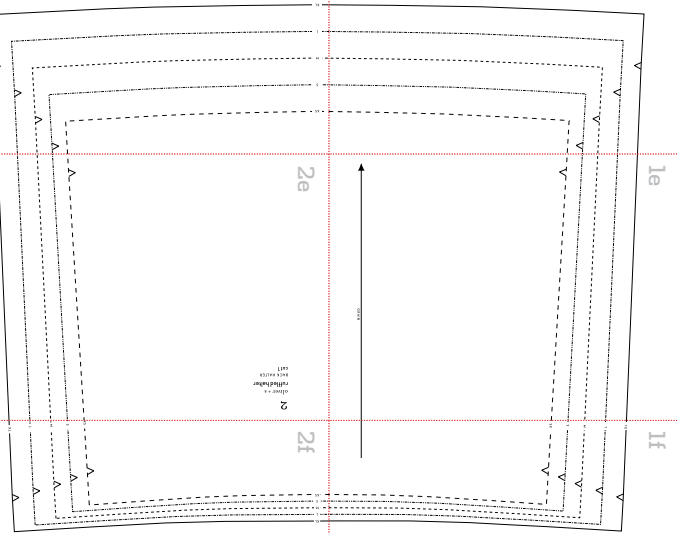
4c



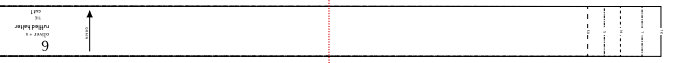
4d



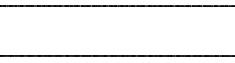
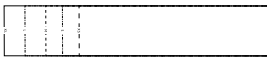
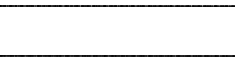
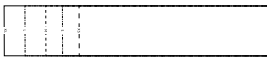
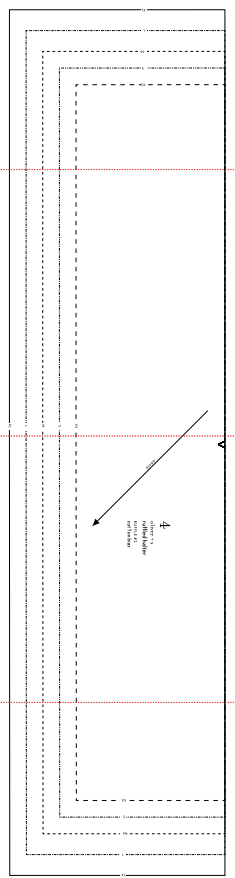
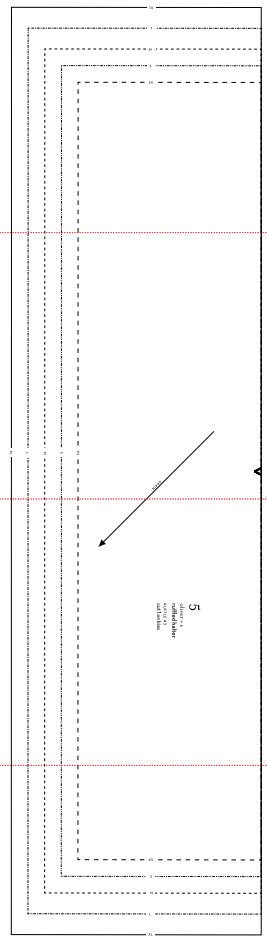
4e



4f



oliver + s  
 1. 1.5 cm  
 2. 1.5 cm  
 3. 1.5 cm  
 4. 1.5 cm  
 5. 1.5 cm  
 6. 1.5 cm



# 1a

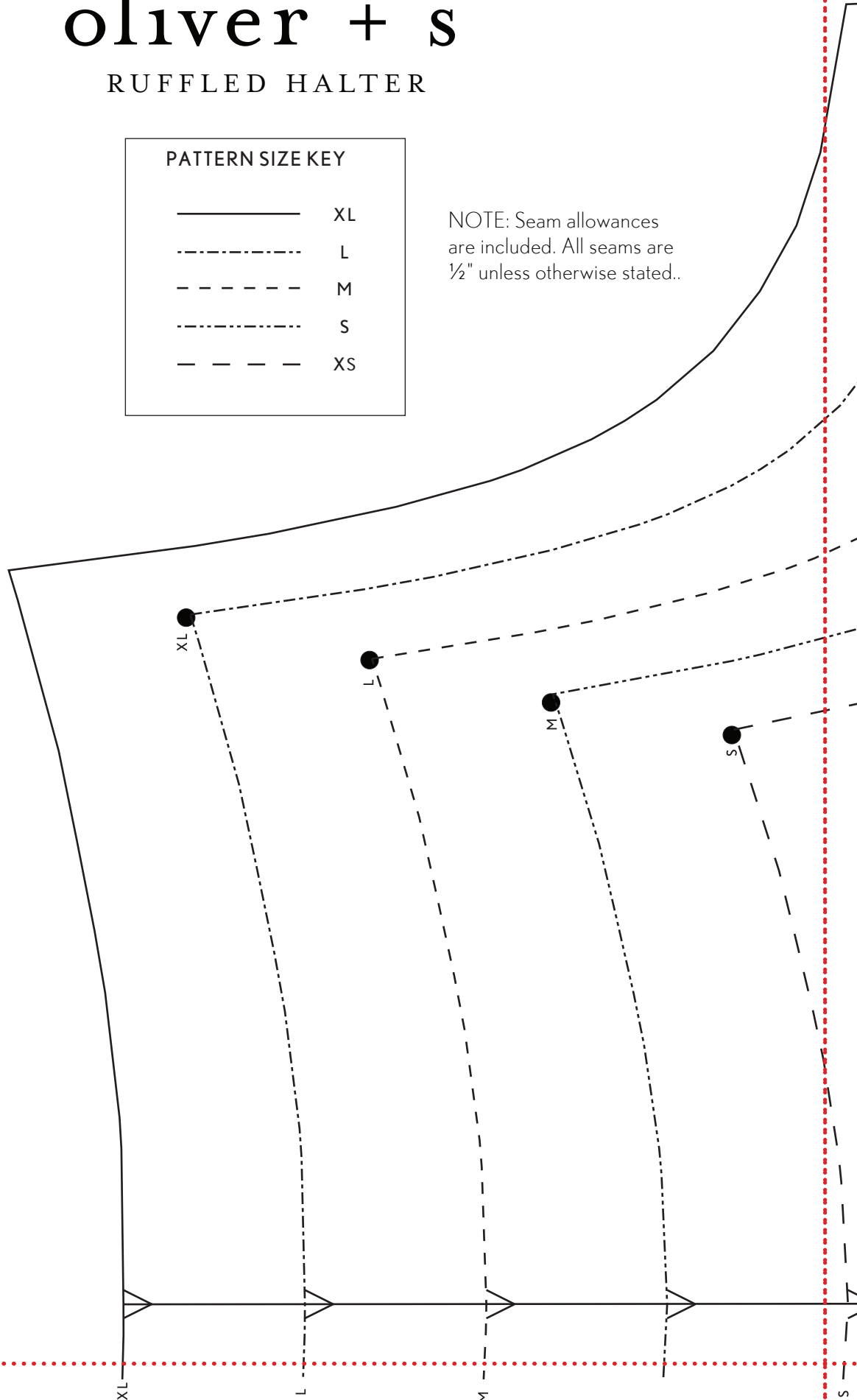
# oliver + s

## RUFFLED HALTER

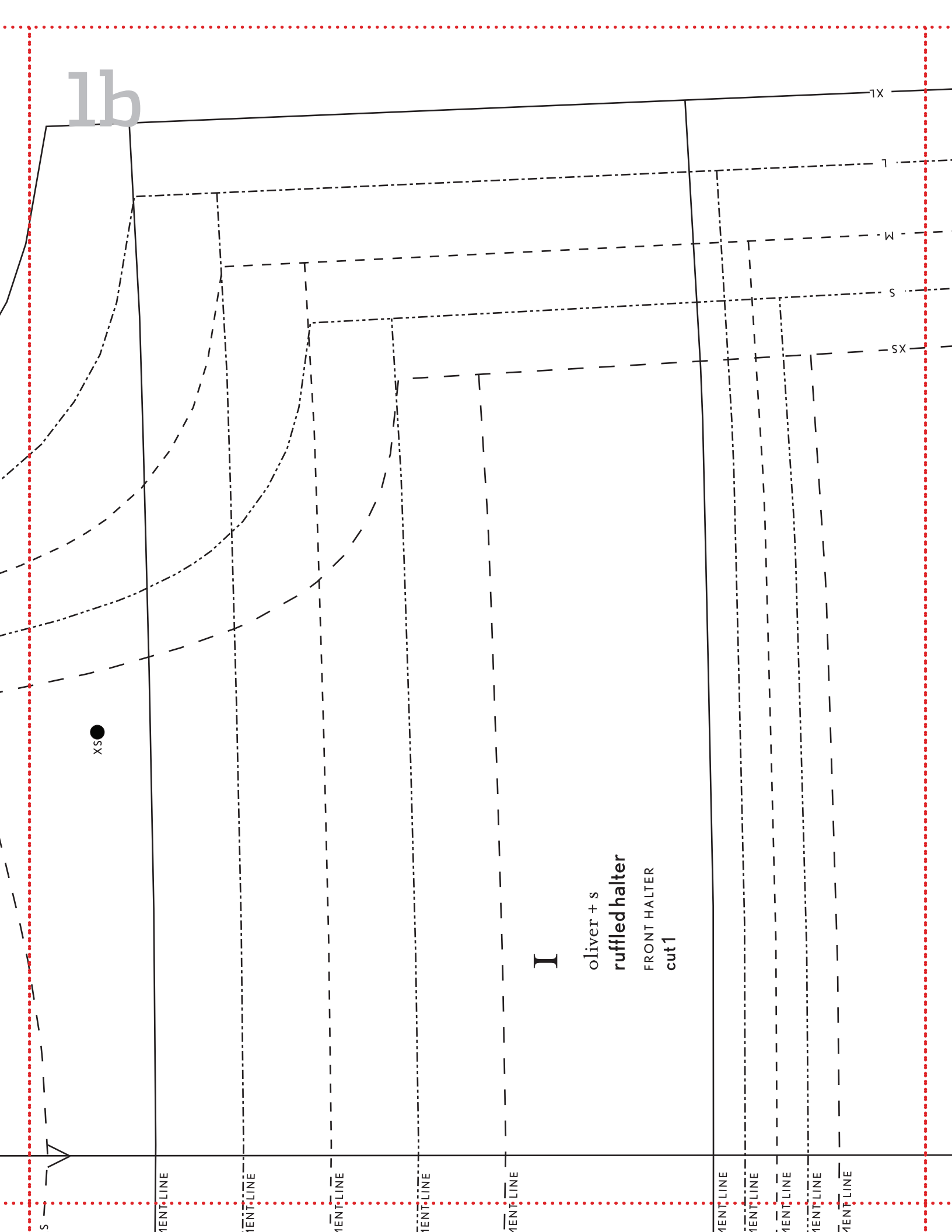
### PATTERN SIZE KEY

—————	XL
- - - - -	L
- - - - -	M
- - - - -	S
- - - - -	XS

NOTE: Seam allowances are included. All seams are 1/2" unless otherwise stated..



1b



XS ●

I

oliver + s  
ruffled halter  
FRONT HALTER  
cut 1

MENT-LINE

MENT-LINE

MENT-LINE

MENT-LINE

MENT-LINE

MENT-LINE

MENT-LINE

MENT-LINE

MENT-LINE

MENT-LINE

1X

1

W

S

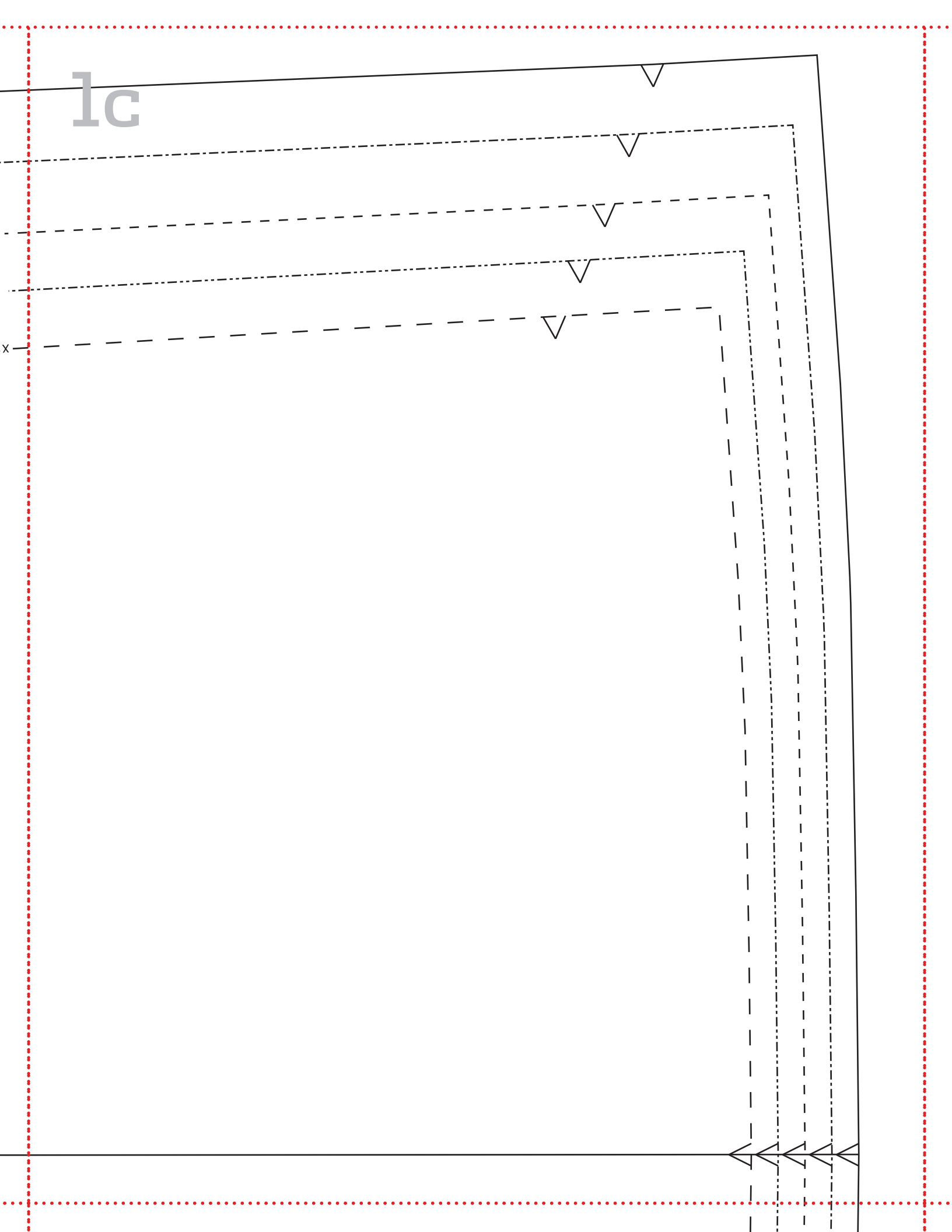
SX

S

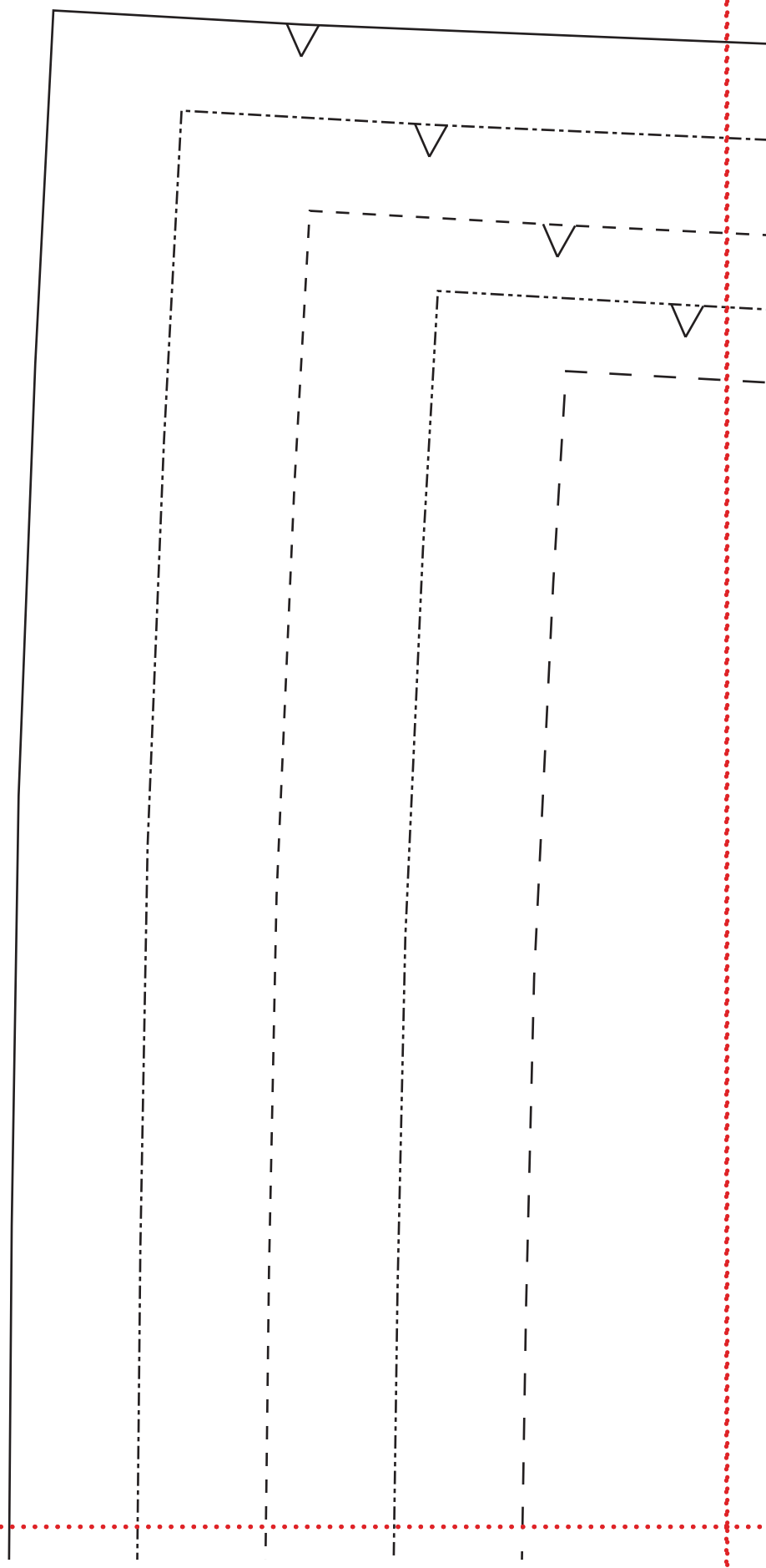


lc

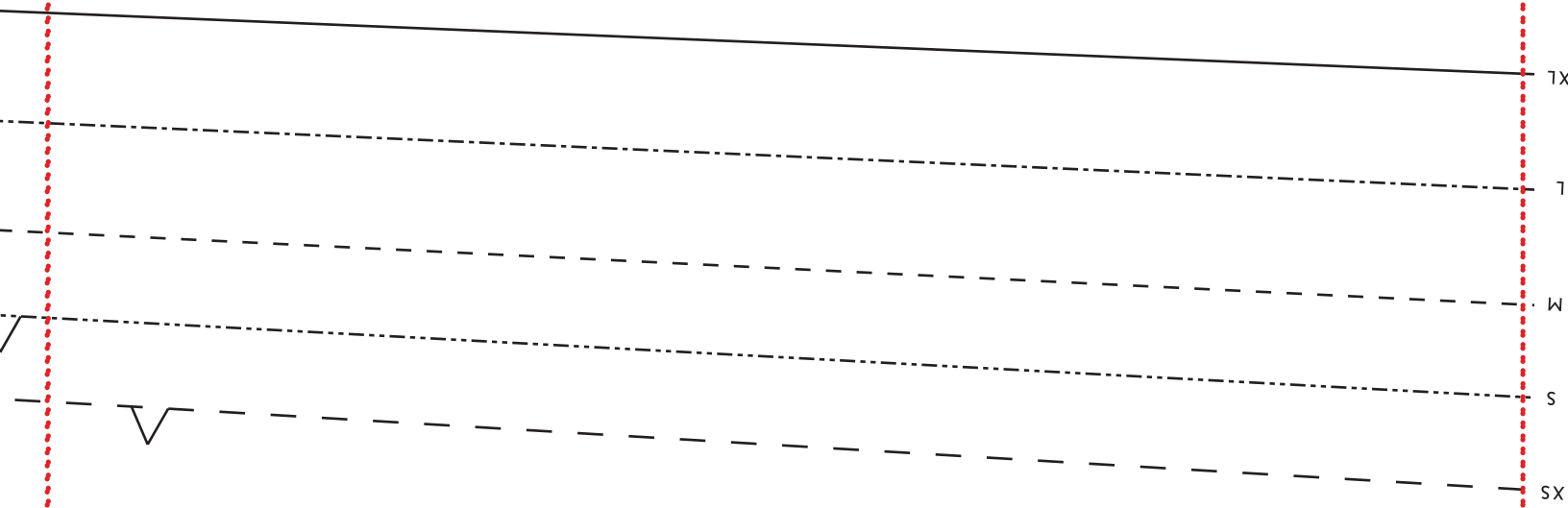
x



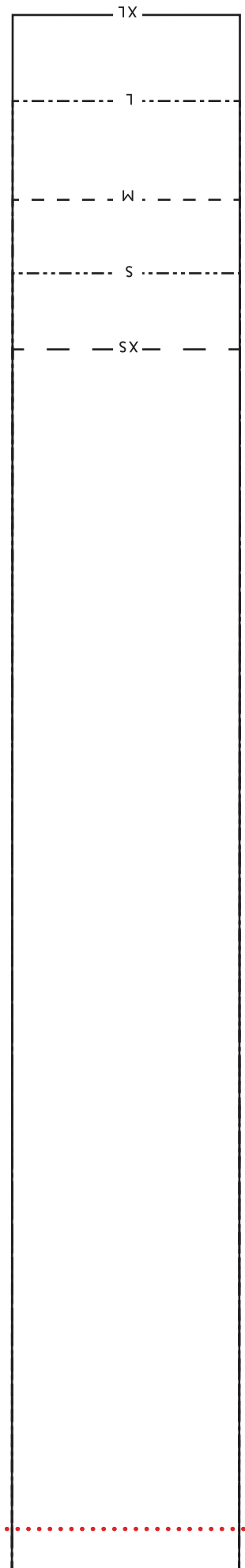
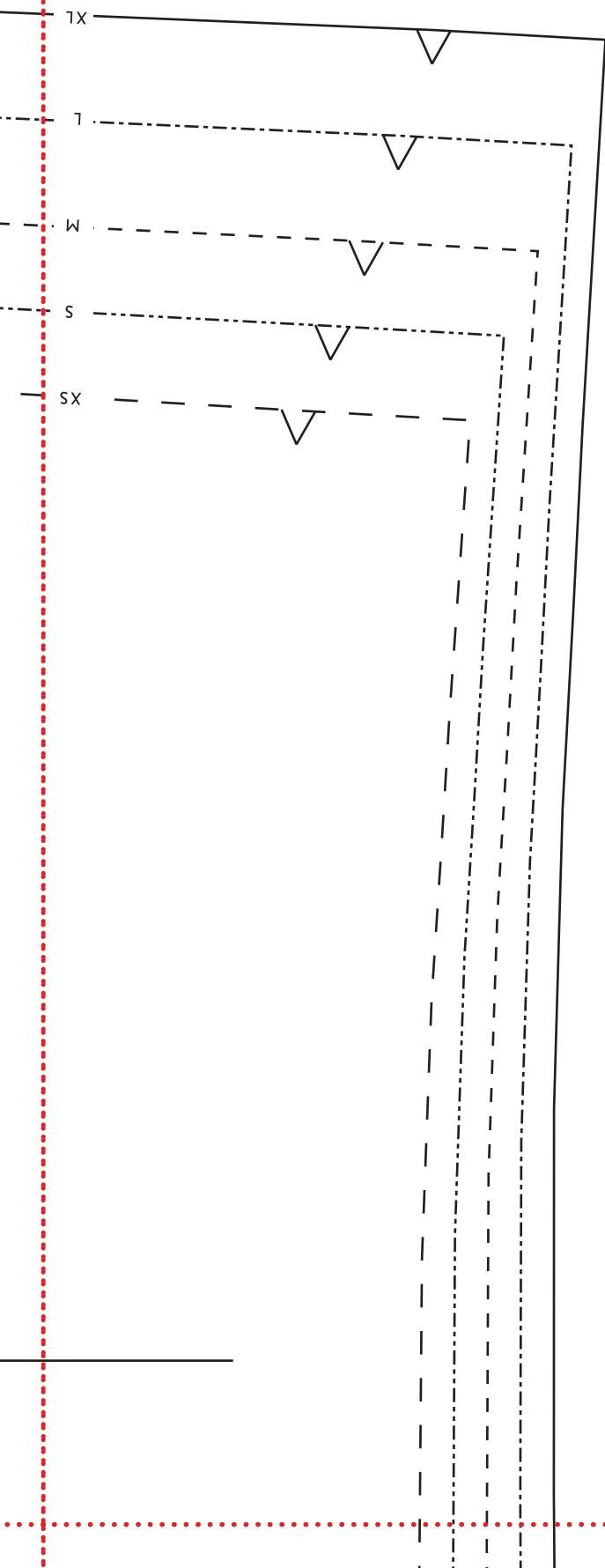
1d



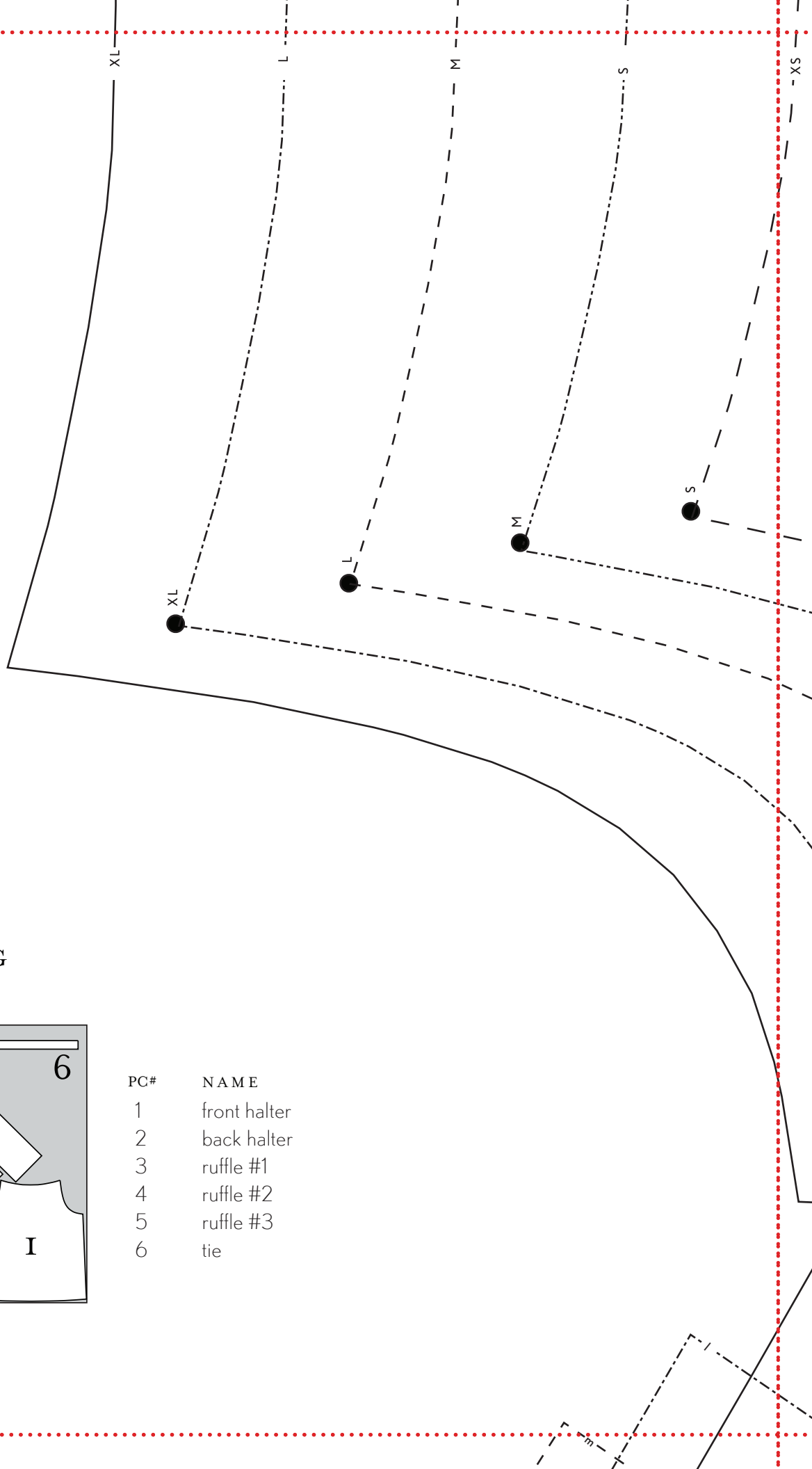
1e



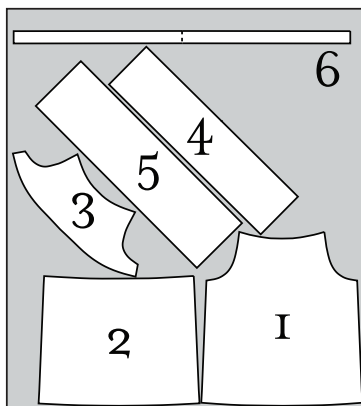
# lf



# 2a



## CUTTING LAYOUT



PC#	NAME
1	front halter
2	back halter
3	ruffle #1
4	ruffle #2
5	ruffle #3
6	tie



# 2b

XS

XL RUFFLE #2 PLACEMENT LINE

L RUFFLE #2 PLACEMENT LINE

M RUFFLE #2 PLACEMENT LINE

S RUFFLE #2 PLACEMENT LINE

XS RUFFLE #2 PLACEMENT LINE

XL RUFFLE #3 PLACEMENT LINE

L RUFFLE #3 PLACEMENT LINE

M RUFFLE #3 PLACEMENT LINE

S RUFFLE #3 PLACEMENT LINE

XS RUFFLE #3 PLACEMENT LINE

GRAIN

XS

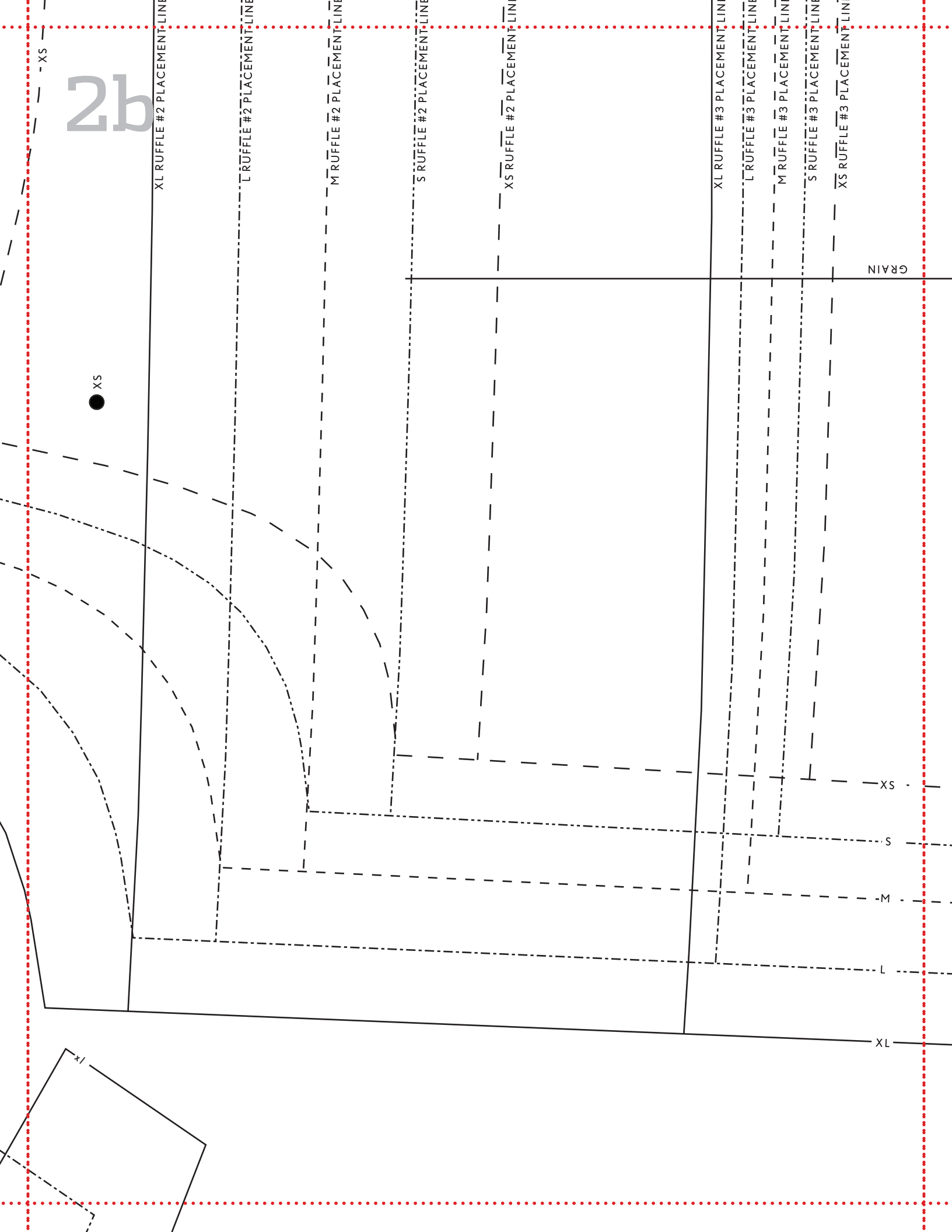
S

M

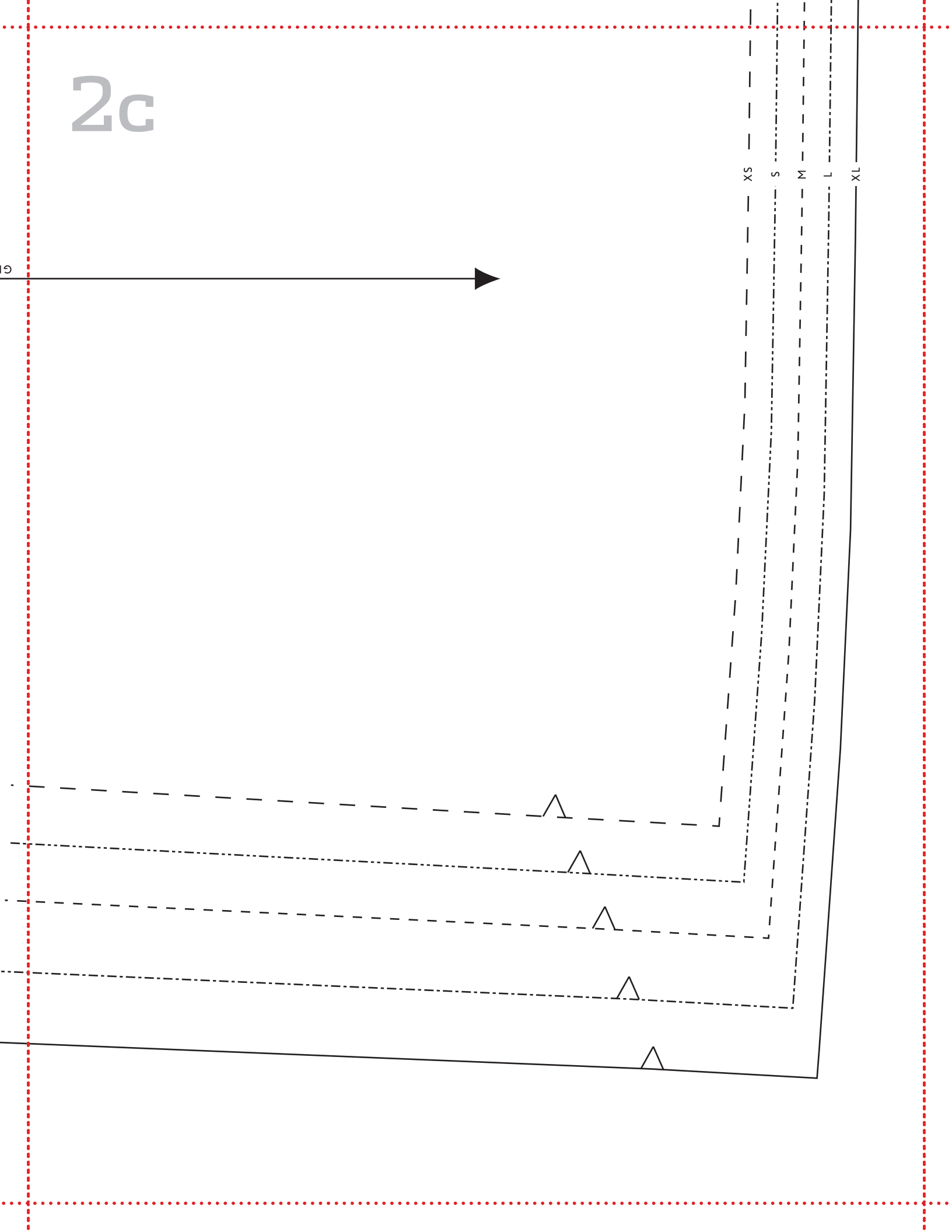
L

XL

XL



2c



2d

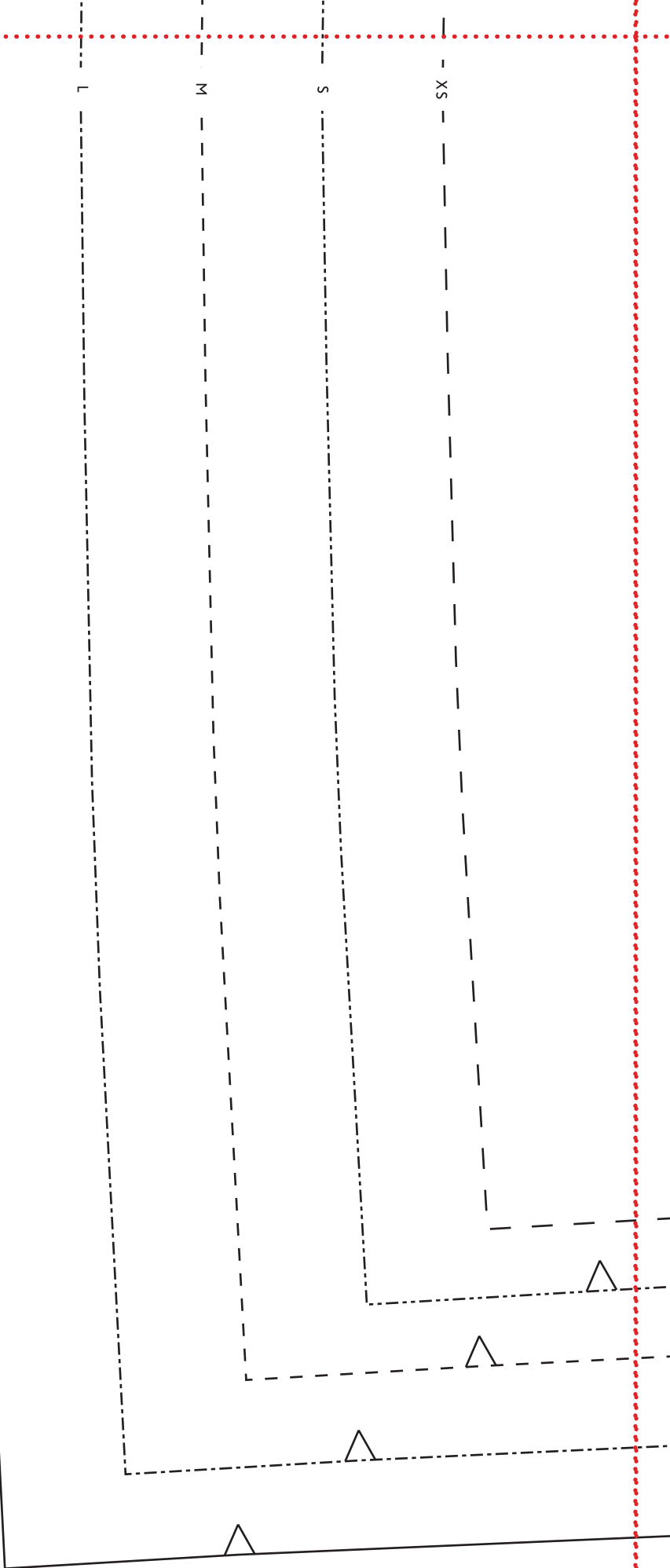
X

L

M

S

XS



2e

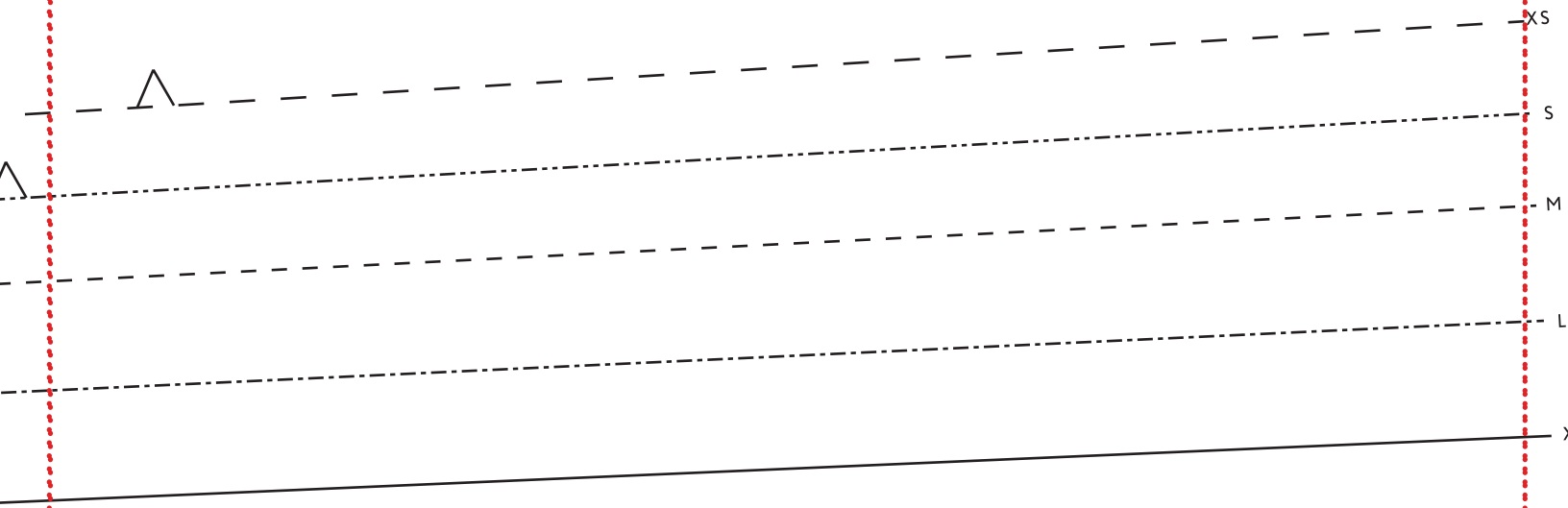
2

oliver + s

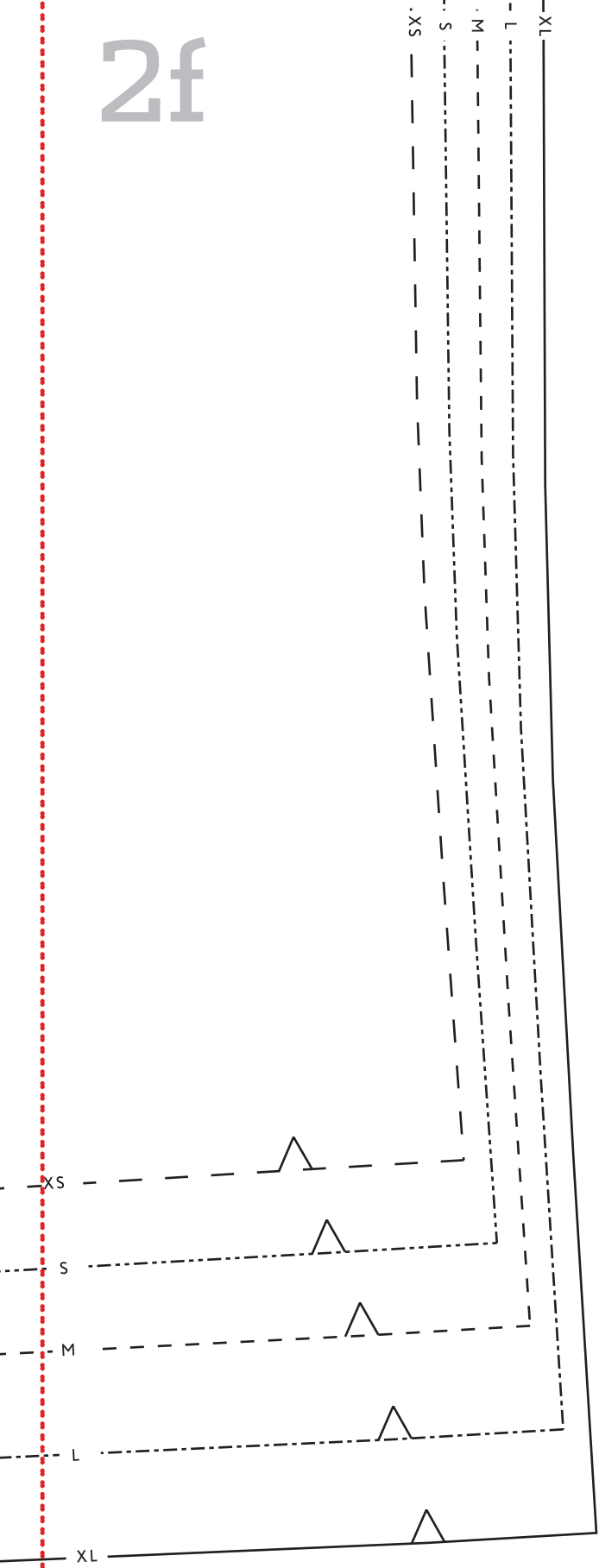
ruffled halter

BACK HALTER

cut 1



2f

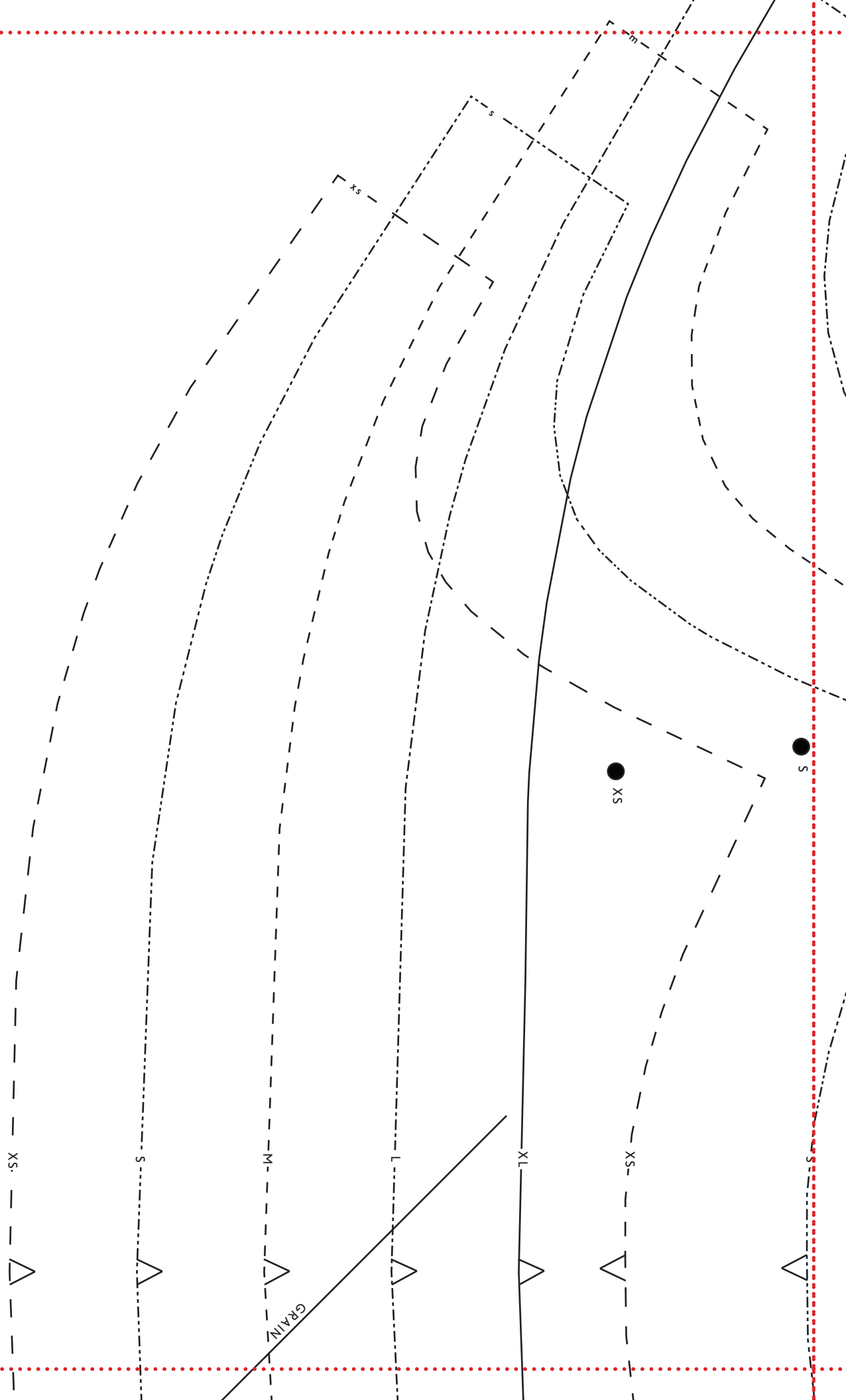


GRAIN

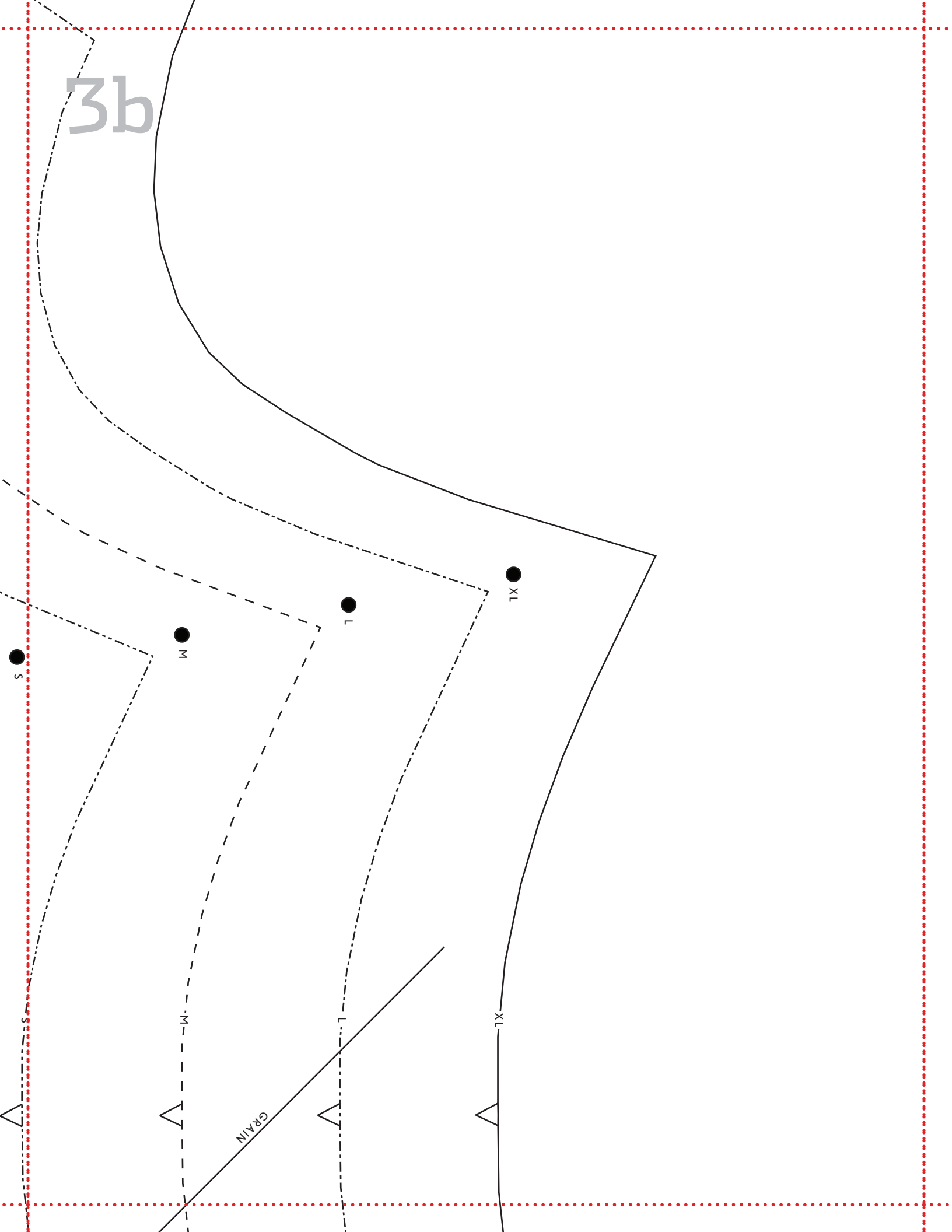
6  
oliver + s  
ruffled halter  
TIE  
cut 1



3a



3b



3c

The diagram illustrates four nested rectangles, each defined by a different line style. From left to right, the rectangles are labeled XL, L, M, and XS. The XL rectangle is the outermost and is defined by a solid black line. The L rectangle is defined by a dotted line. The M rectangle is defined by a dashed line. The XS rectangle is the innermost and is defined by a dash-dot line. All rectangles are aligned to the top and left edges of the frame. The entire diagram is enclosed within a larger frame consisting of a solid black line on the left and bottom, and a red dotted line on the top and right.

3d

XS

S

M

L

XL

3e

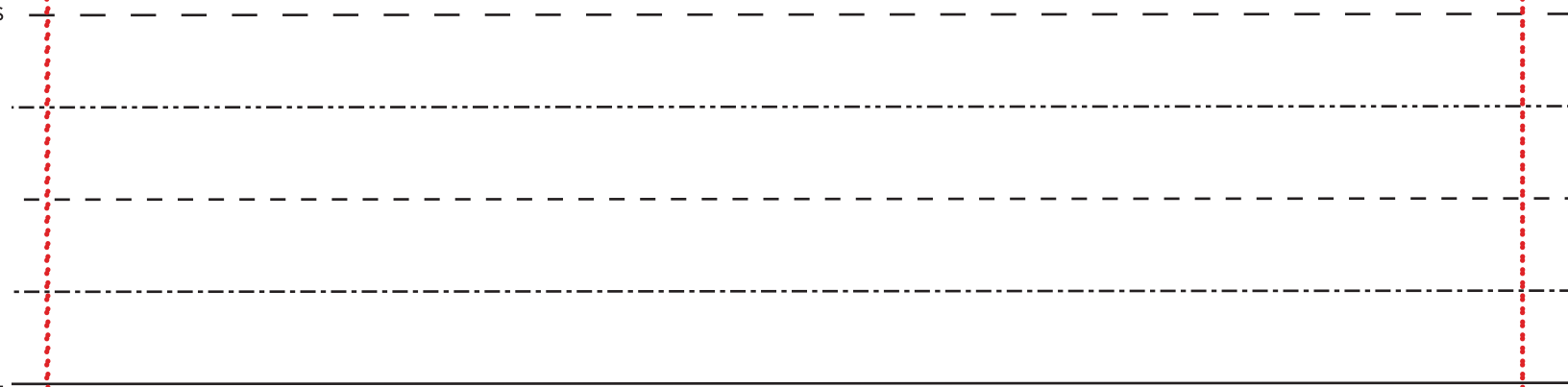


GRAIN

4

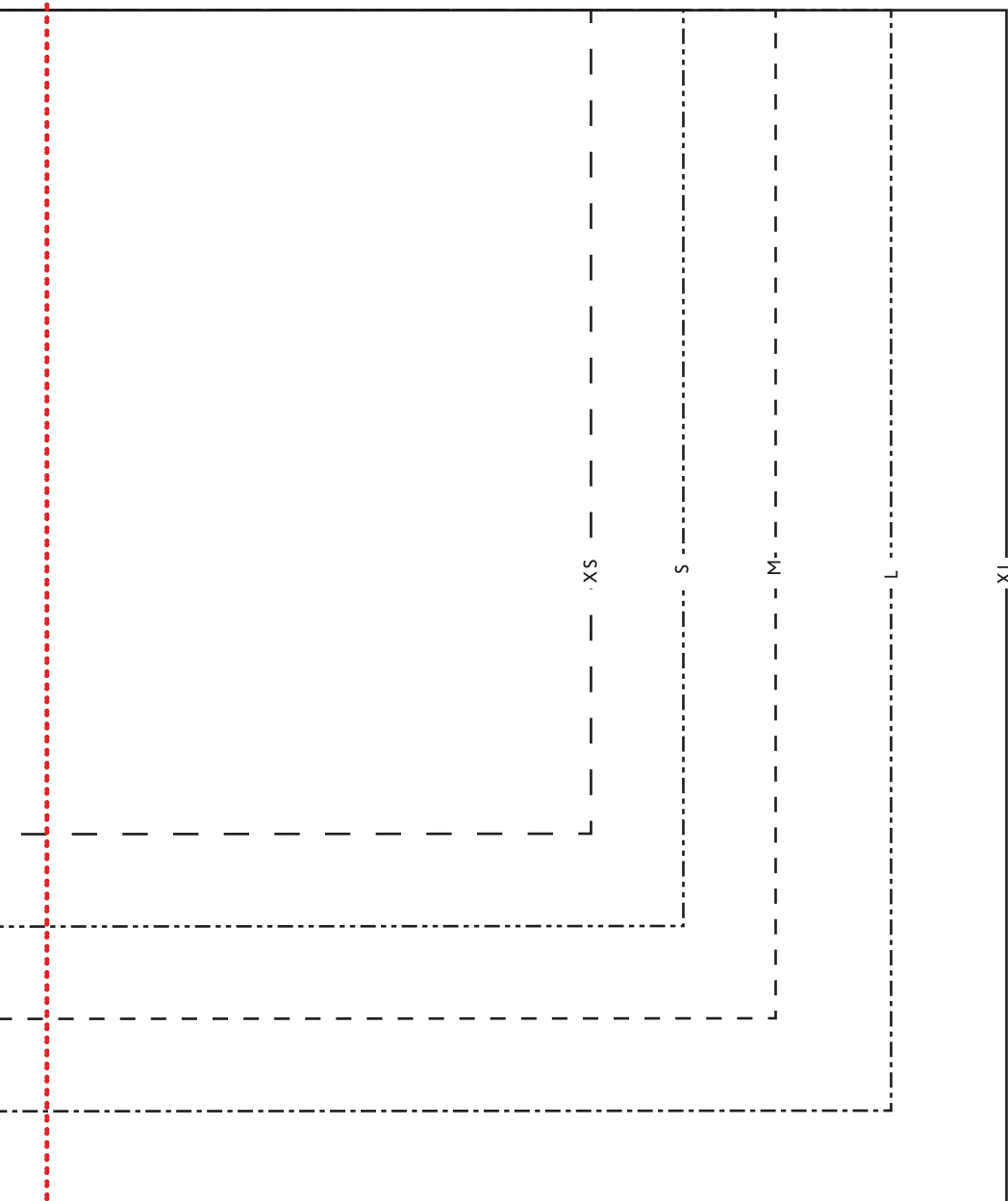
oliver + s  
ruffled halter

RUFFLE #2  
cut 1 on bias





3f



4a



3

oliver + s

ruffled halter

ruffle #1

cut 1 on bias

XS ●

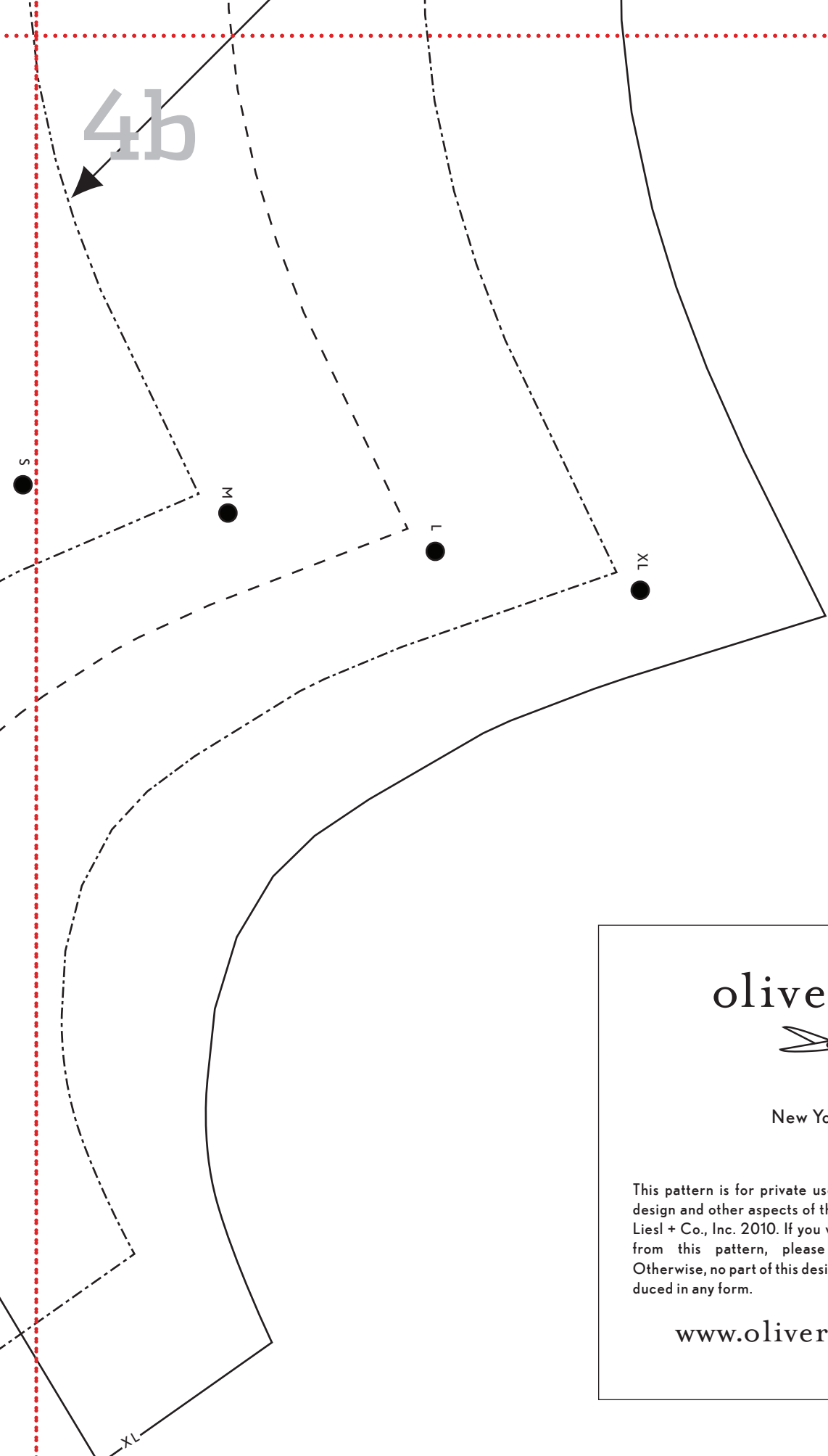
S ●

XS

S

M

4b



oliver + s

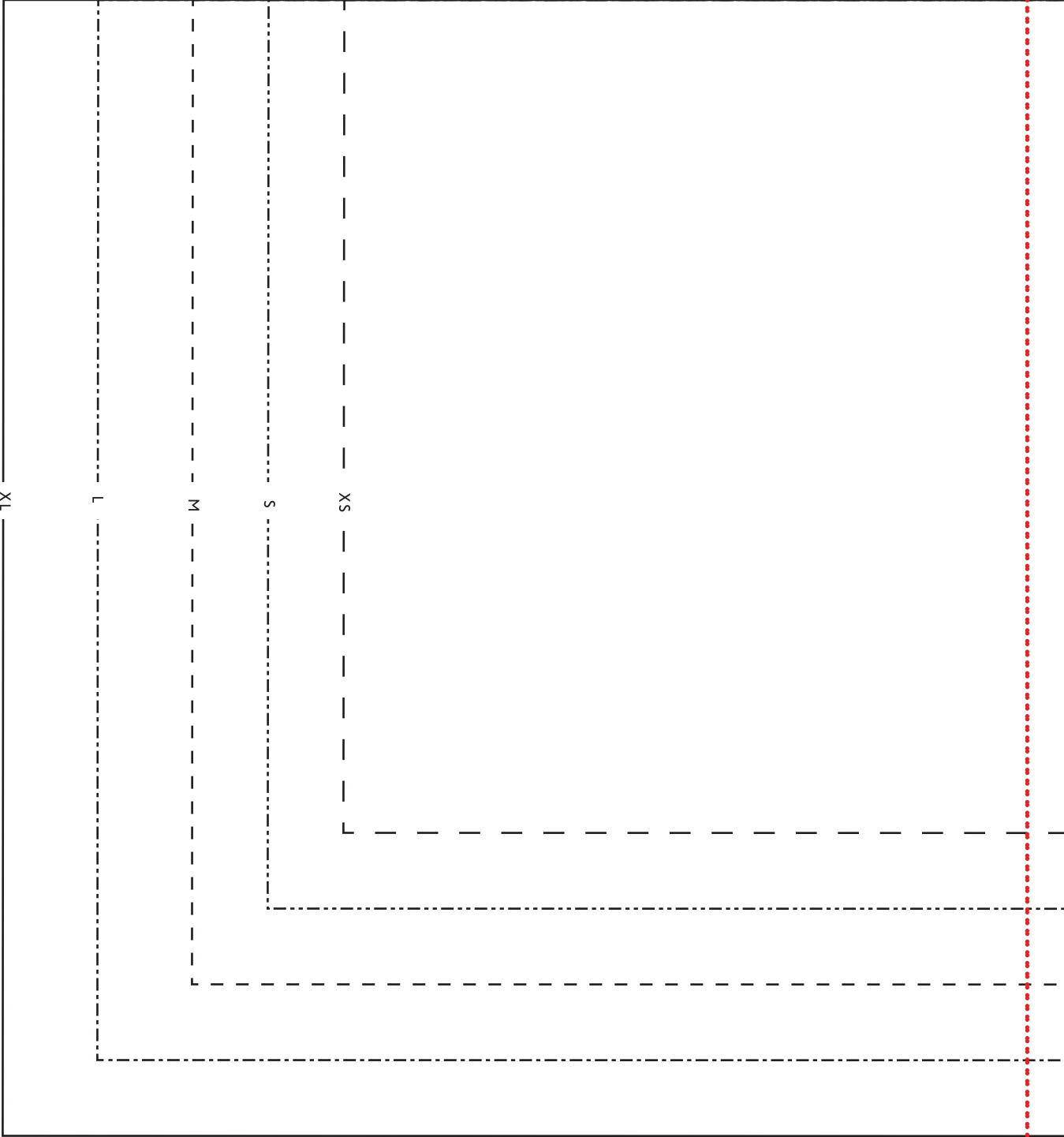


New York, NY

This pattern is for private use only. The images, layout, design and other aspects of this pattern are copyright © Liesl + Co., Inc. 2010. If you wish to make and sell items from this pattern, please contact us for terms. Otherwise, no part of this design or pattern may be reproduced in any form.

[www.oliverands.com](http://www.oliverands.com)

4c



4d



GRAIN

XS

S

M

L

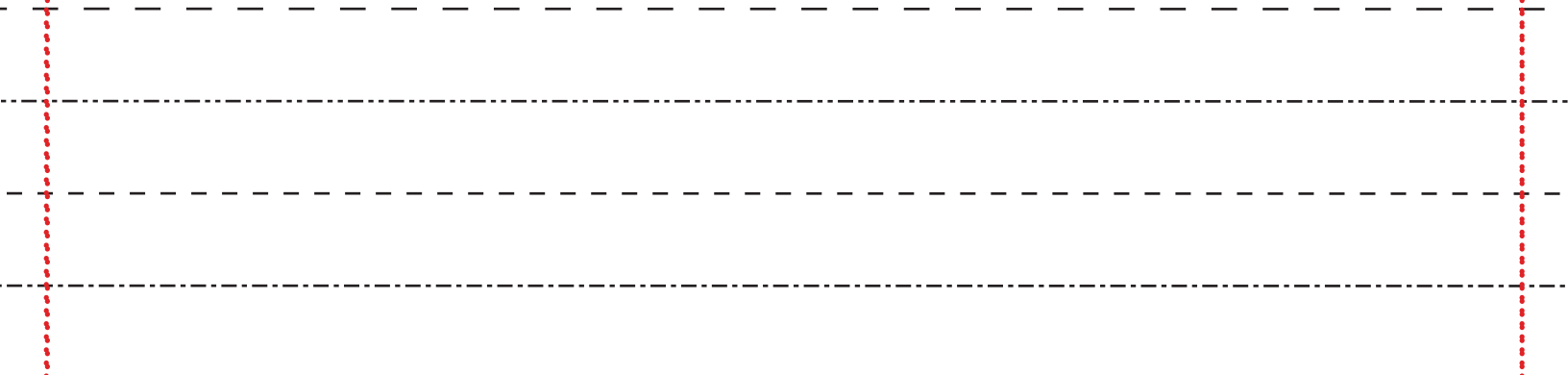
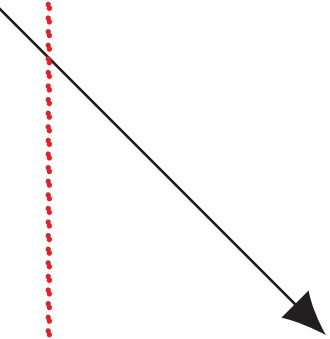
XL

4e

5

oliver + s  
ruffled halter

RUFFLE #3  
cut 1 on bias



4f

